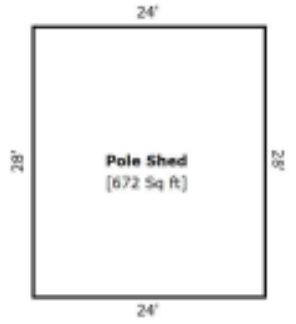
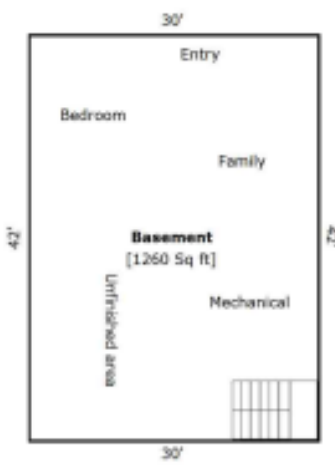
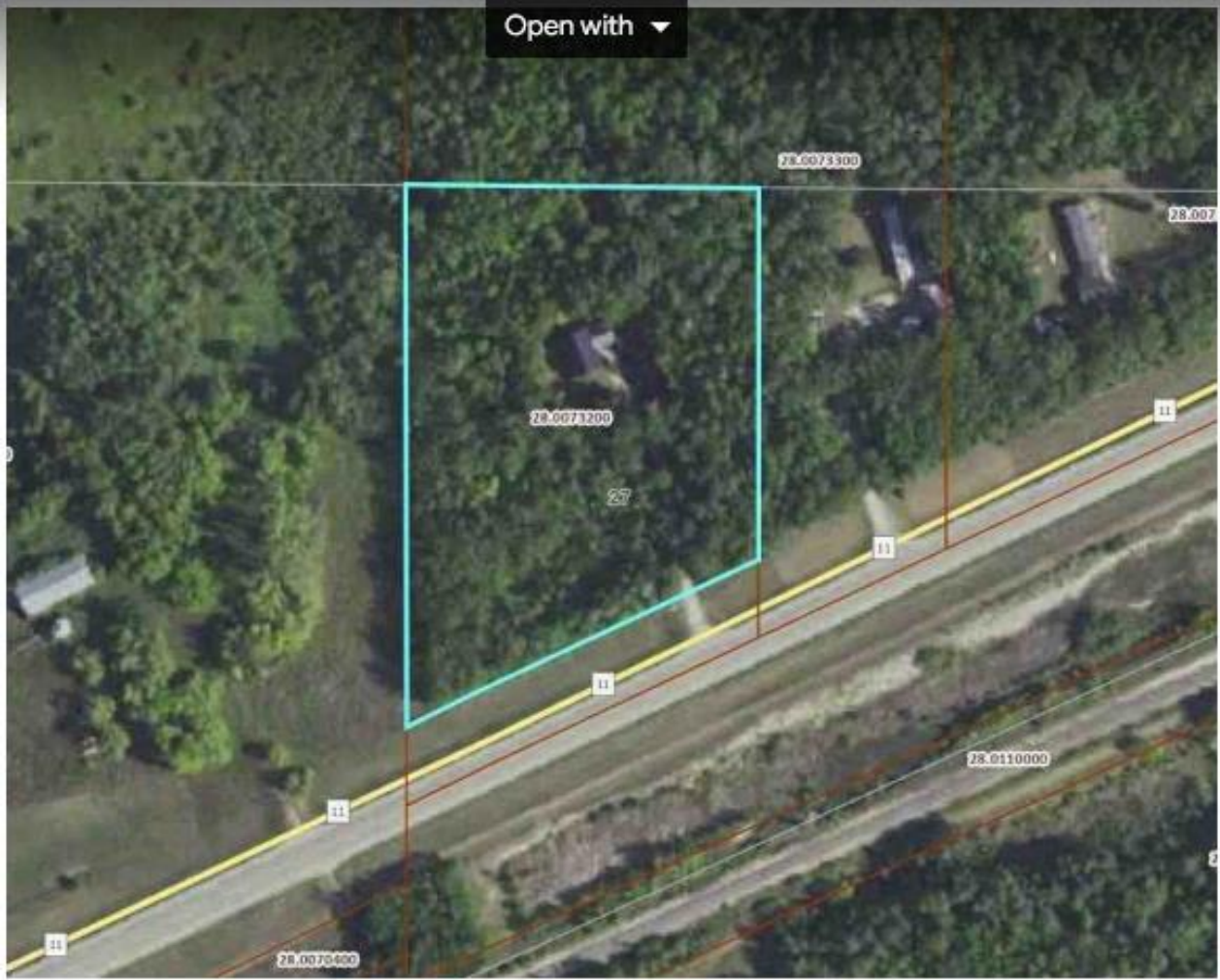


Open with ▾



Living Area		Calculation Details	
1st Floor	1260 Sq ft		$42 \times 30 = 1260$
Total Living Area (Rounded):	1260 Sq ft		
Non-living Area			
2 Car Attached	576 Sq ft		$24 \times 24 = 576$
Basement	1260 Sq ft		$42 \times 30 = 1260$